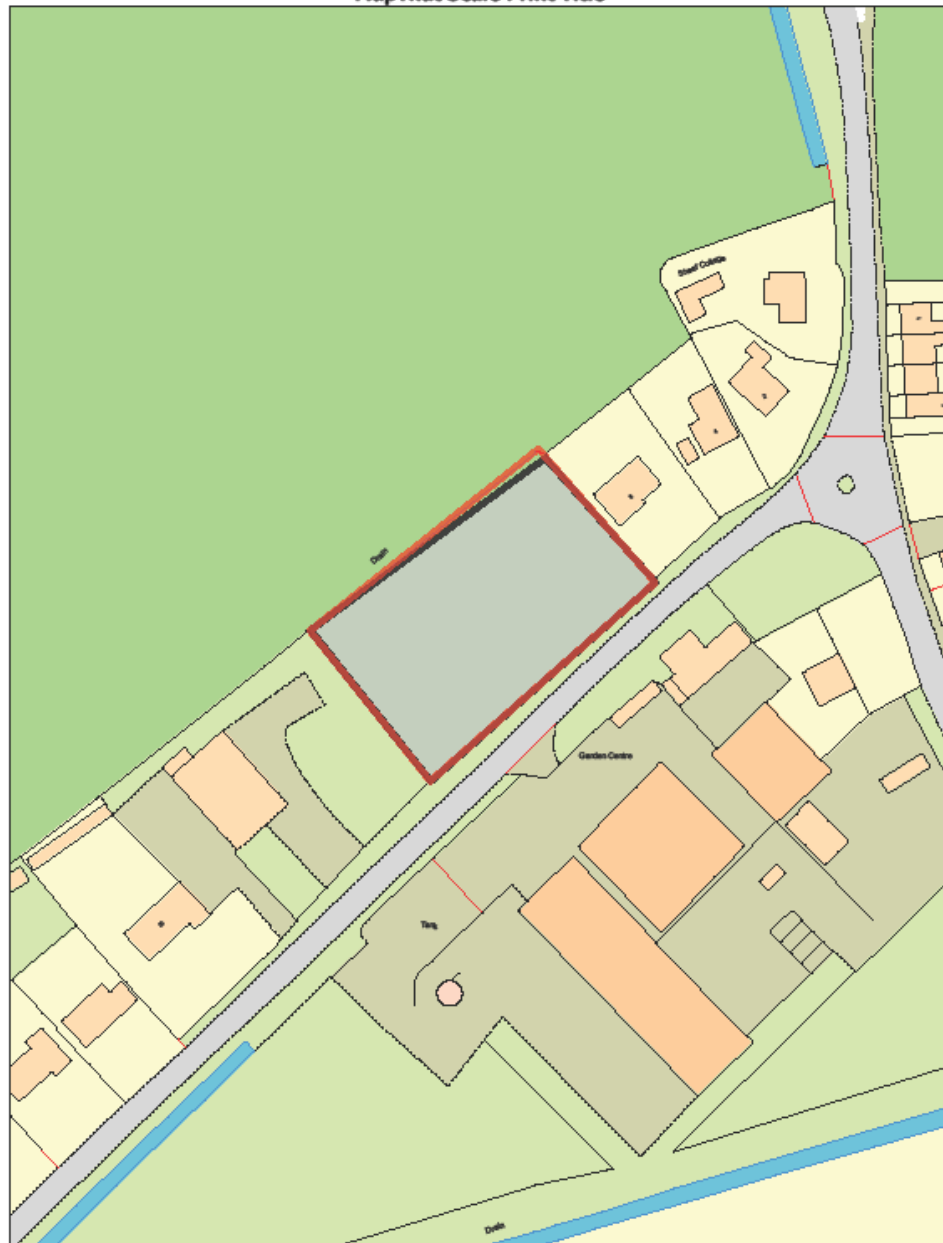


Welcome to the
Planning
Committee













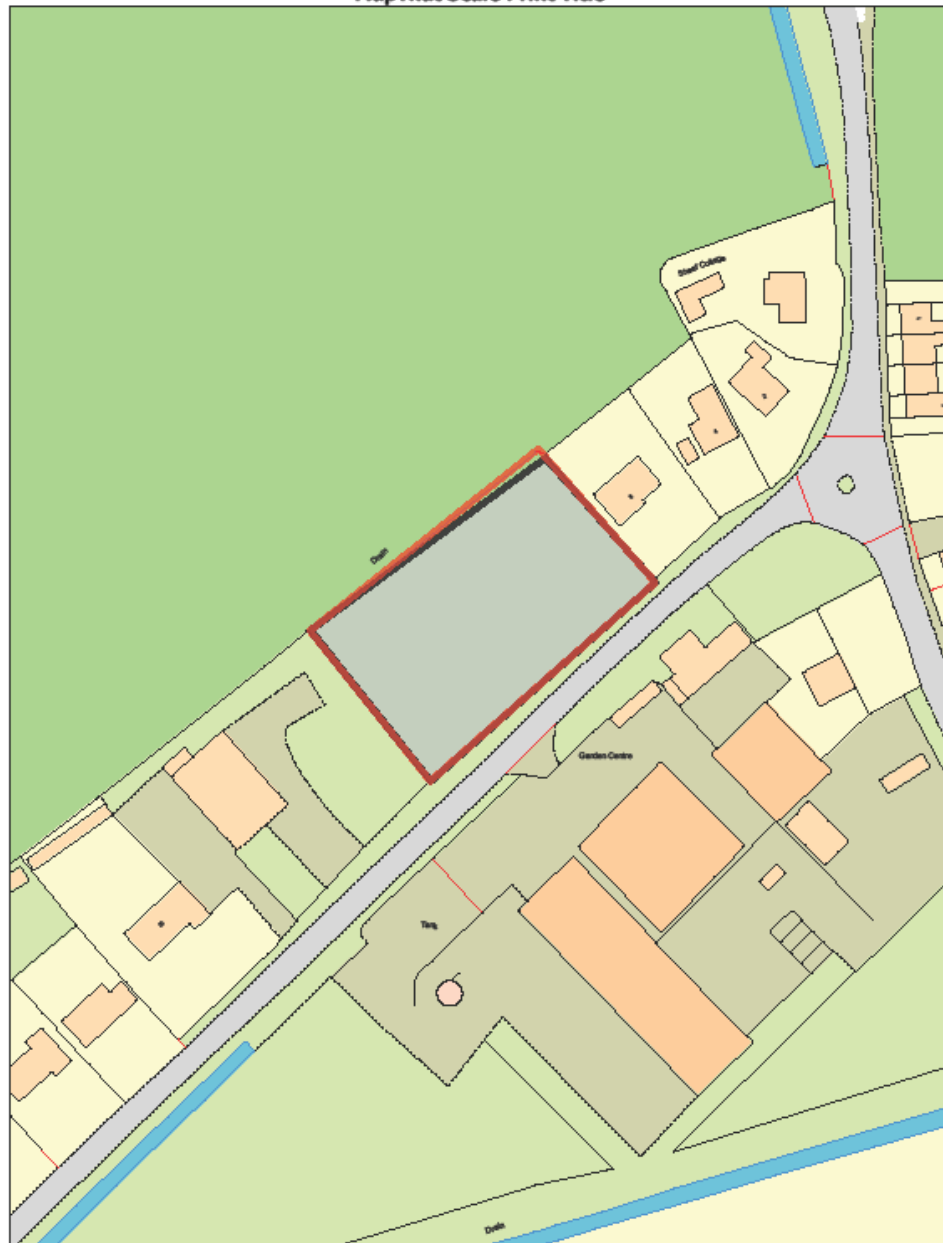




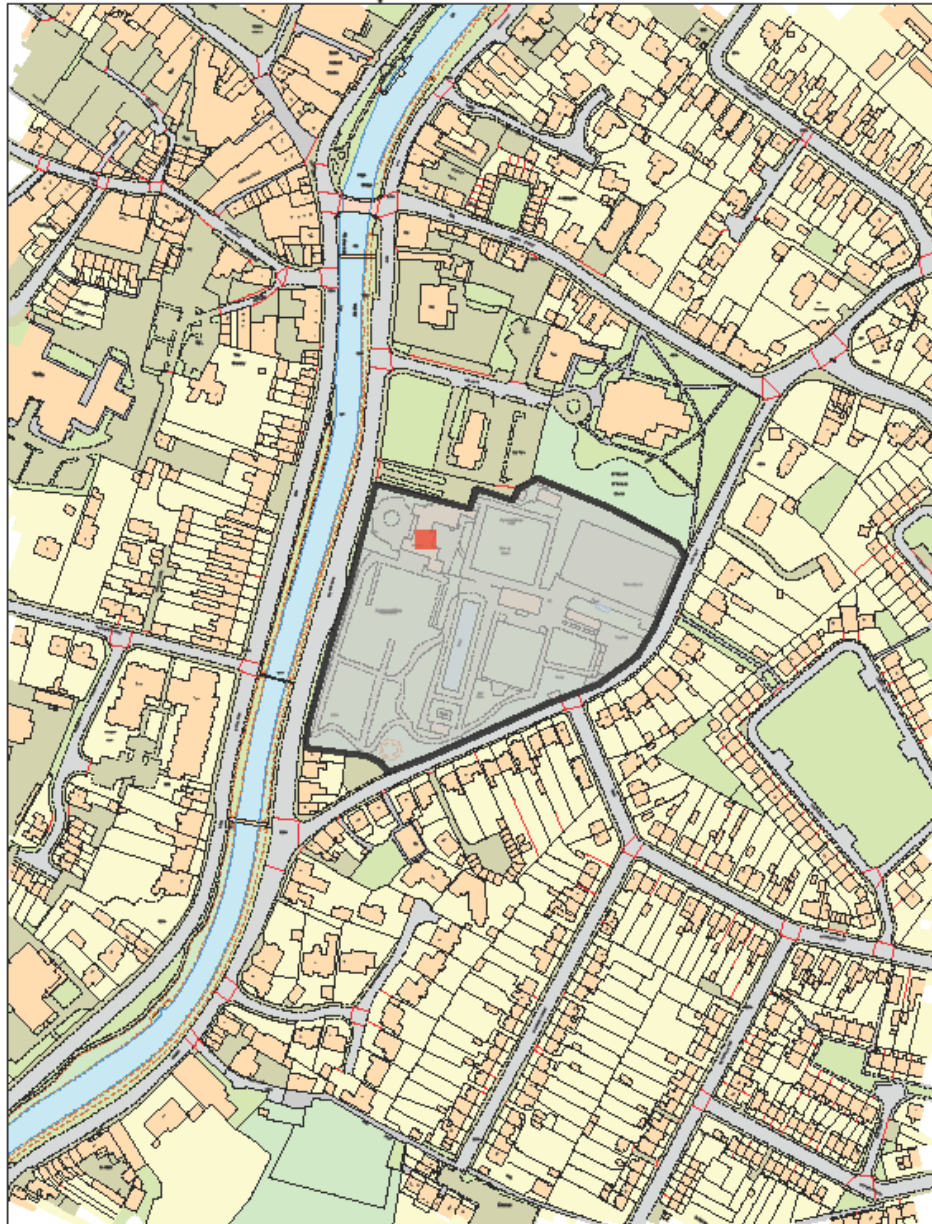




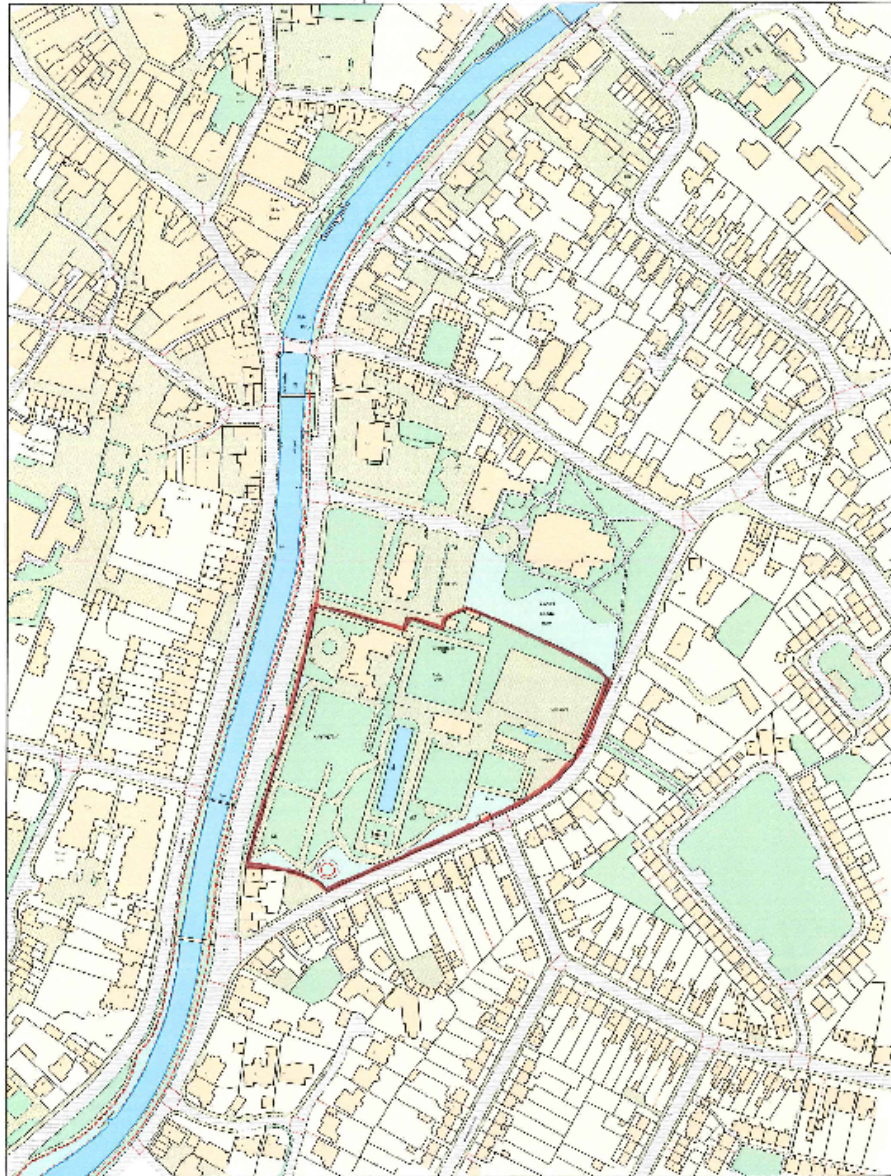




MapThat Scale Print Title

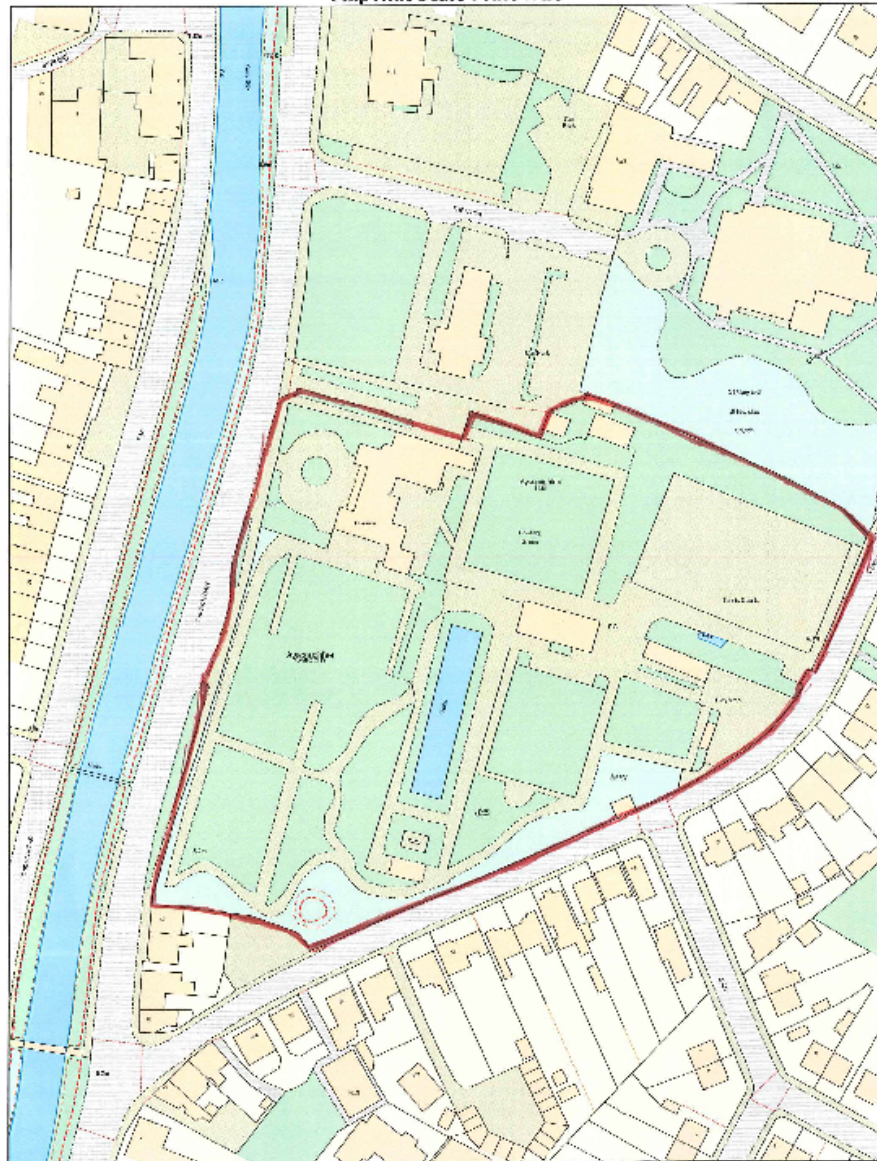


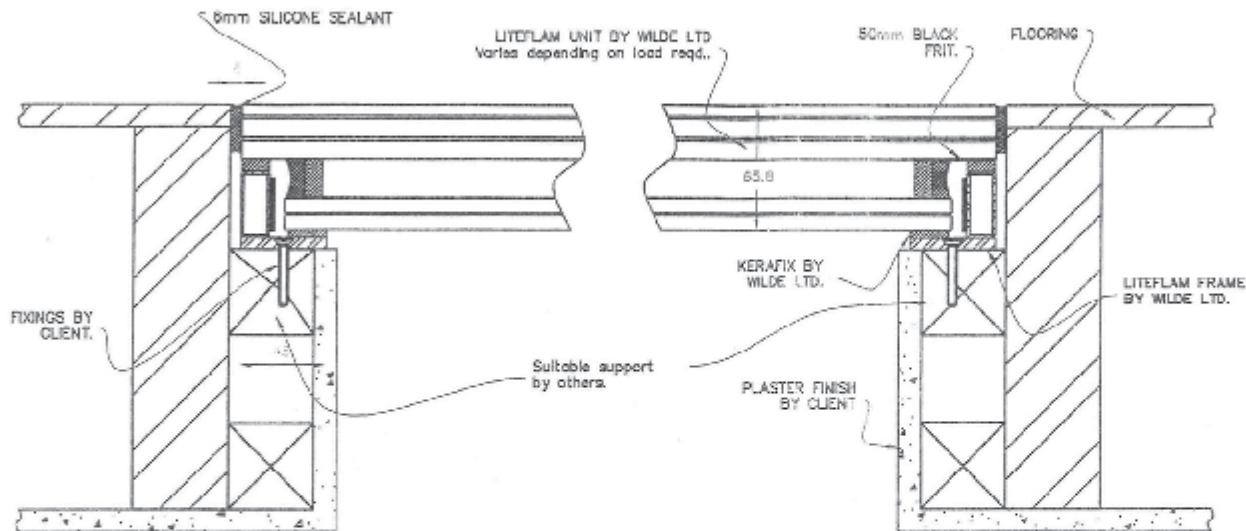
MapThat Scale Print Title



© Crown copyright and database rights 2018 Ordnance Survey 100018351.

MAP SCALE 1:2500
CREATED DATE: 25/11/2018
PHOTOGRAPHIC COPY
LIABLE TO DISTORTION
IN SCALE





TYPICAL LITEFLAM UNIT SECTION

scale 1:2

NOTES

- A. This drawing is to be read in conjunction with the Architect's, engineers and specialist's drawings together with the relevant specifications.
- B. Suppliers shall be supplied, delivered and erected with all materials.
- C. Fabrication and packing shall be carried out entirely in accordance with relevant British Standards codes of practice and specifications.
- D. Structural steelwork shall be Grade 43A in accordance with B.S. 4360.
- E. All bolts shall be S.S. Grade 8.8 bolts and comply with B.S.2382 and shall be supplied stainless in accordance with B.S. 4021.
- F. Surfaces and edges shall comply with BS.6813 with minimums conforming to BS.6320.
- G. All welding work to be carried out by suitably qualified persons to B.S.6870 - 4021.
- H. Structural steelwork is to be power wire brushed, primed and painted as noted and in accordance with the relevant specifications.
- I. The steel supplier should, where necessary, state dimensions for standard size steel.

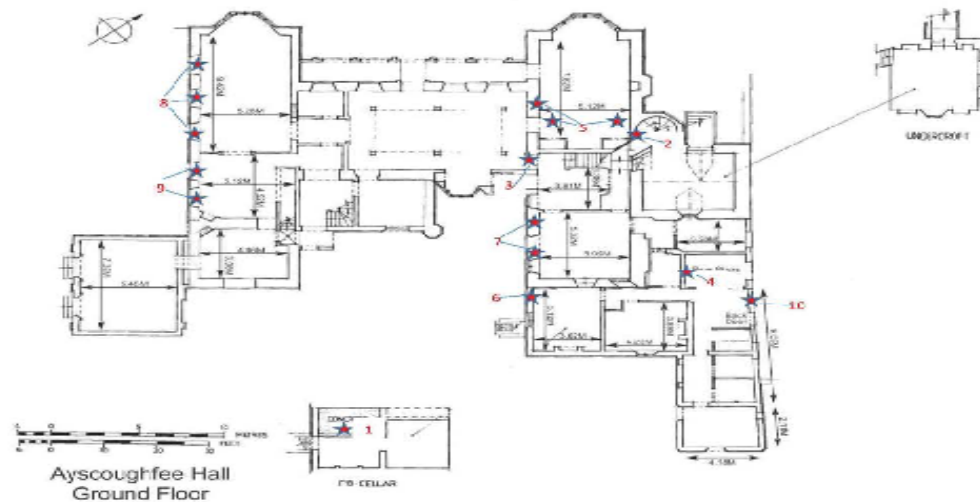
GLAZE - LITEFLAM UNIT COMPOSED 2mm STRUCTURAL GLASS STRENGTHENED WITH PPG INTER-LITE CLEAR GLASS UNLESS ANOTHER OTHERWISE.

FRAME - COMPOSITE Steel TRIP PPG WILD STEEL 60000 KSA.

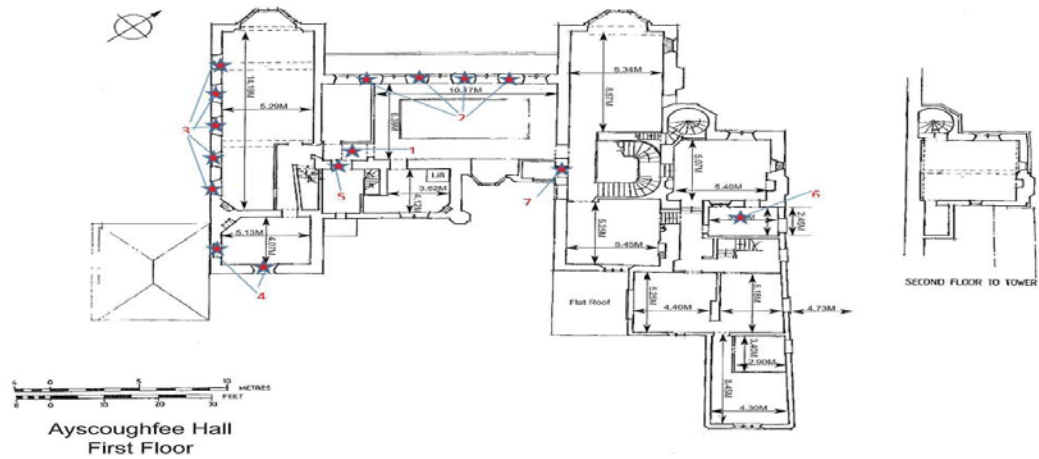
SILICONE GROUT See TECH 83 BASE SILICONE RUBBER COLOUR BLACK.

SILICONE SEAL MINIMUM 7mm to 10mm WET SUPPLIED BY ECH GORDON AS PER SPECIFICATION. COLOUR CLEAR, BLACK, WHITE OR GREY.

CONTRACT		
PROJECT	DESCRIPTION	
TYPICAL LITEFLAM DETAIL		
DRAWN BY	DATE	0000-00-00
SCALE	1:2	
DATE	20/02/20	
This drawing is the confidential and copyright property of Wilde Contracts Limited and must not be disseminated, loaned or copied without their written permission. Copyright 2000. Fire Rated Glass Flooring Patent No. 2,275,028	WILDE CONTRACTS LTD CHAREN AU HOUSE 1 MILES STREET OLDHAM Lancashire T: 0161 624 6324 F: 0161 627 3770	



Item Number	Work
1	Under drawing of the Victorian Cellar
2	Tower Room door to rear staircase - Fitting of intumescent fire and smoke seals
3	Secondary door to main Hall - Fitting of Intumescent fire and smoke seals
4	Rear staircase door to hallway - Fitting of Intumescent fire and smoke seals
5	Geest Gallery - Intumescent Paint to cupboard doors and internal door.
6	Medieval History Room - Internal and External Decoration
7	Kitchen - Internal and External Decoration
8	Spalding Gentleman's Exhibits - Internal and External Decoration
9	Library - Internal and External Decoration
10	Pointing around the Back door



Item Number	Work
1	Glass Viewing Ceiling – Replace Perspex viewing with fire rated product
2	Gallery – Internal and External Decoration
3	Fens Room – Internal and External Decoration
4	South Holland Peoples Room – Internal and External Decoration
5	First floor door to Geometric staircase - Fitting of Intumescent fire and smoke seals
6	Costume Store - Fitting of Intumescent fire and smoke seals
7	Electrical Cupboard – Upgrade to FD30



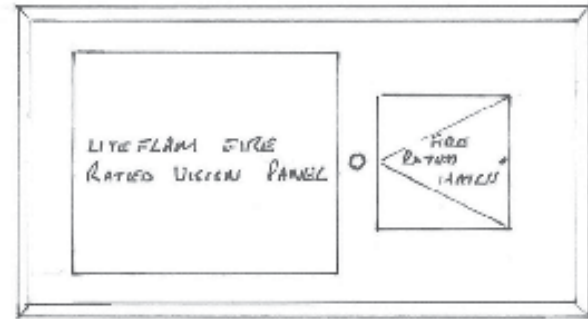
Ayscoughfee
Grounds

Item Number	Work
1	Exterior decoration of the pavilion
2	Removal of circular bench around tree
3	Replacement tarmac around trees adjacent to tennis court
4	Replacement path near Ice House

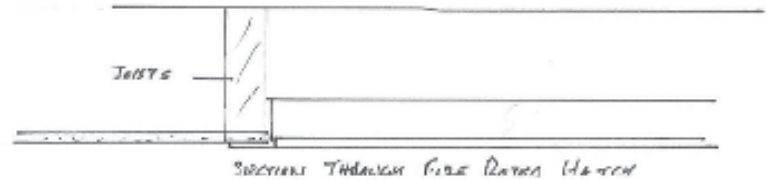
PROPOSED FIRE RATED VISION PANEL & HATCH
 AYSOUGHTREE HALL MUSEUM, SPALDING.



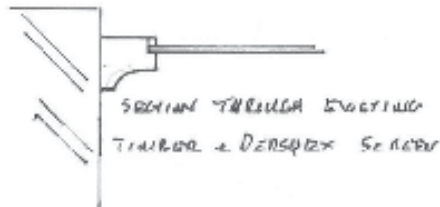
EXISTING REFLECTED CEILING PLAN. TIMBER + PERSPOX



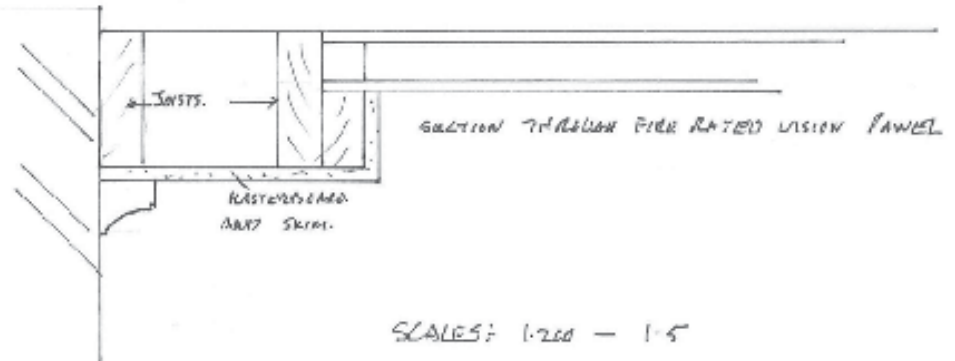
PROPOSED REFLECTED CEILING PLAN. FIRE RATED.



SECTION THROUGH FIRE RATED HATCH



SECTION THROUGH EXISTING
 TIMBER + PERSPOX SECTION



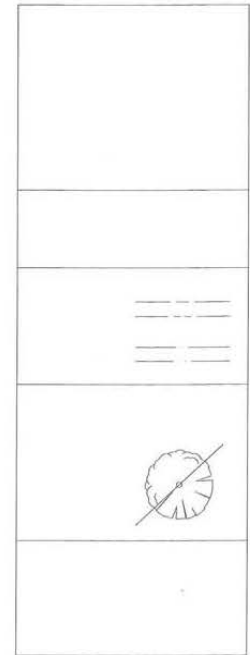
SECTION THROUGH FIRE RATED VISION PANEL

SCALE: 1:200 - 1:5



A) New 1m wide
Self Binding gravel
slip

B) new iron Bench to
be included following
works.







*Characters of the
Gentlemen's Society*

[The text on the display board is mostly illegible due to the image quality and lighting. It appears to be a historical or descriptive text with several paragraphs.]











LAYSOUGHFEE CAFE











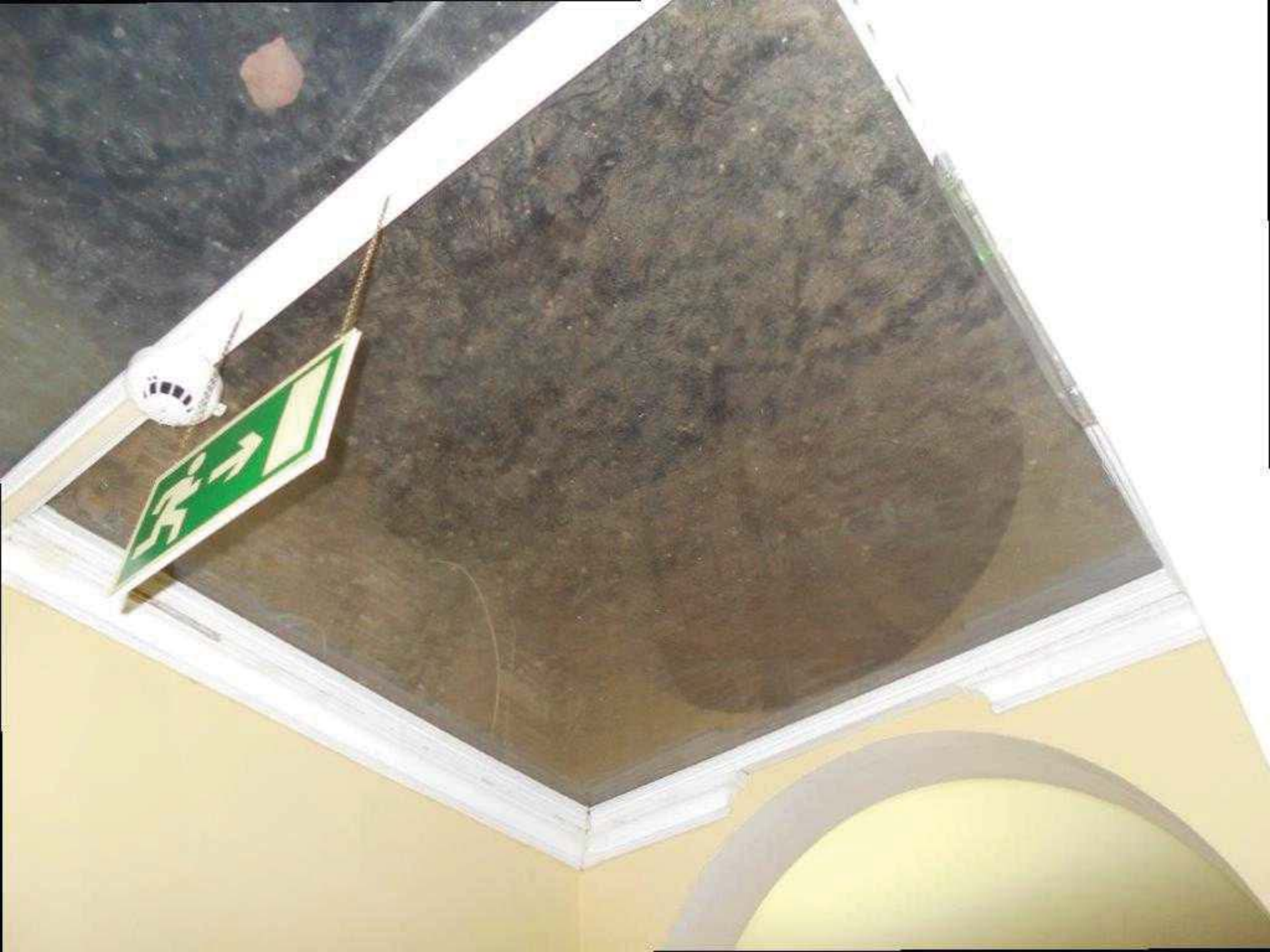


















The Medieval Stairs

These stairs, with their cross-vaulted ceiling of moulded brick ribs, are an original medieval feature.

Unfortunately, they were damaged when the downstairs library was installed in the 19th Century. Now only 5 of the original stone risers remain in place.

The stairs can be entered from the ground floor either by an internal door in the south wing or through an external door in the north wall, and they give access to the service quarters.









The Geest Gallery

Geest was established in Spalding in 1935 and its name has had a close association with the local community ever since.

The name originates from the Dutch family Van Geest and the sons in the photograph - Jan Geest, Coenraadt (Cooney) and Maurits (Mertis) - were the founders of the original Geest Company using flower-beds in the UK. By the end of the 1960s the business had expanded into fresh produce.

In 1983 Geest developed a business growing industry in the Wisbech Market, which expanded the opening of business opening centres around the UK.

The first Spalding Flower Parade was held in 1959 and Coenraadt Van Geest, MC, LMC, was one of the founders. Geest has supported this parade ever since.

In the 1970s Geest started making fresh prepared food and in the 1980s Geest started trading in the fast-growing trolley food products, including ready meals, picnic, fish, stable, fresh pasta, chocolate, sauces.

In 1996 Geest sold its Canada operations to focus on the fresh and trolley foods and produce markets. By 2001 Geest was operating 40 sites in the UK, Continental Europe and South Africa, and employing over 14,000 people.

In 2005 Geest was acquired by an Icelandic company Bekkavog Group. It is still operating in Spalding from prepared foods and produce.

Spalding is a fundamental part of the Geest story and the Company's commitment to The Geest Gallery is just one way of thanking the local people for their continued support.



The Van Geest family



The Geest Company 1935



The Geest Company 1983



The Geest Company 2005



The Geest Company 2005





Frequently Asked Questions

What is the history of the building?

How can I access the building?

What are the opening hours?

How can I contact the building?

What are the accessibility options?

What are the parking options?

What are the ticket prices?

What are the concession rates?

What are the group rates?

What are the school rates?

What are the family rates?

What are the senior rates?

What are the student rates?

What are the youth rates?

What are the child rates?

What are the infant rates?

What are the baby rates?

What are the toddler rates?

What are the preschool rates?

What are the primary rates?

What are the secondary rates?

What are the tertiary rates?

What are the postgraduate rates?

What are the research rates?

What are the professional rates?

What are the corporate rates?

What are the government rates?

What are the international rates?

What are the foreign rates?

What are the overseas rates?

What are the expatriate rates?

What are the diaspora rates?

What are the immigrant rates?

What are the refugee rates?

What are the asylum rates?

What are the naturalization rates?

What are the citizenship rates?

What are the residency rates?

What are the visa rates?

What are the passport rates?

What are the travel rates?

What are the transport rates?

What are the accommodation rates?

What are the food rates?

What are the drink rates?

What are the entertainment rates?

What are the recreation rates?

What are the sports rates?

What are the leisure rates?

What are the hobby rates?

What are the interest rates?

What are the investment rates?

What are the savings rates?

What are the insurance rates?

What are the legal rates?

What are the medical rates?

What are the dental rates?

What are the veterinary rates?

What are the educational rates?

What are the training rates?

What are the professional rates?

What are the business rates?

What are the industry rates?

What are the sector rates?

What are the market rates?

What are the economic rates?

What are the financial rates?

What are the social rates?

What are the cultural rates?

What are the artistic rates?

What are the literary rates?

What are the musical rates?

What are the theatrical rates?

What are the cinematic rates?

What are the television rates?

What are the radio rates?

What are the internet rates?

What are the mobile rates?

What are the digital rates?

What are the virtual rates?

What are the augmented rates?

What are the mixed rates?

What are the real rates?

What are the physical rates?

What are the tangible rates?

What are the intangible rates?

What are the visible rates?

What are the invisible rates?

What are the measurable rates?

What are the unmeasurable rates?

What are the quantifiable rates?

What are the unquantifiable rates?

What are the countable rates?

What are the uncountable rates?

What are the enumerable rates?

What are the unenumerable rates?

What are the calculable rates?

What are the uncalculable rates?

What are the measurable rates?

What are the unmeasurable rates?

What are the quantifiable rates?

What are the unquantifiable rates?

What are the countable rates?

What are the uncountable rates?

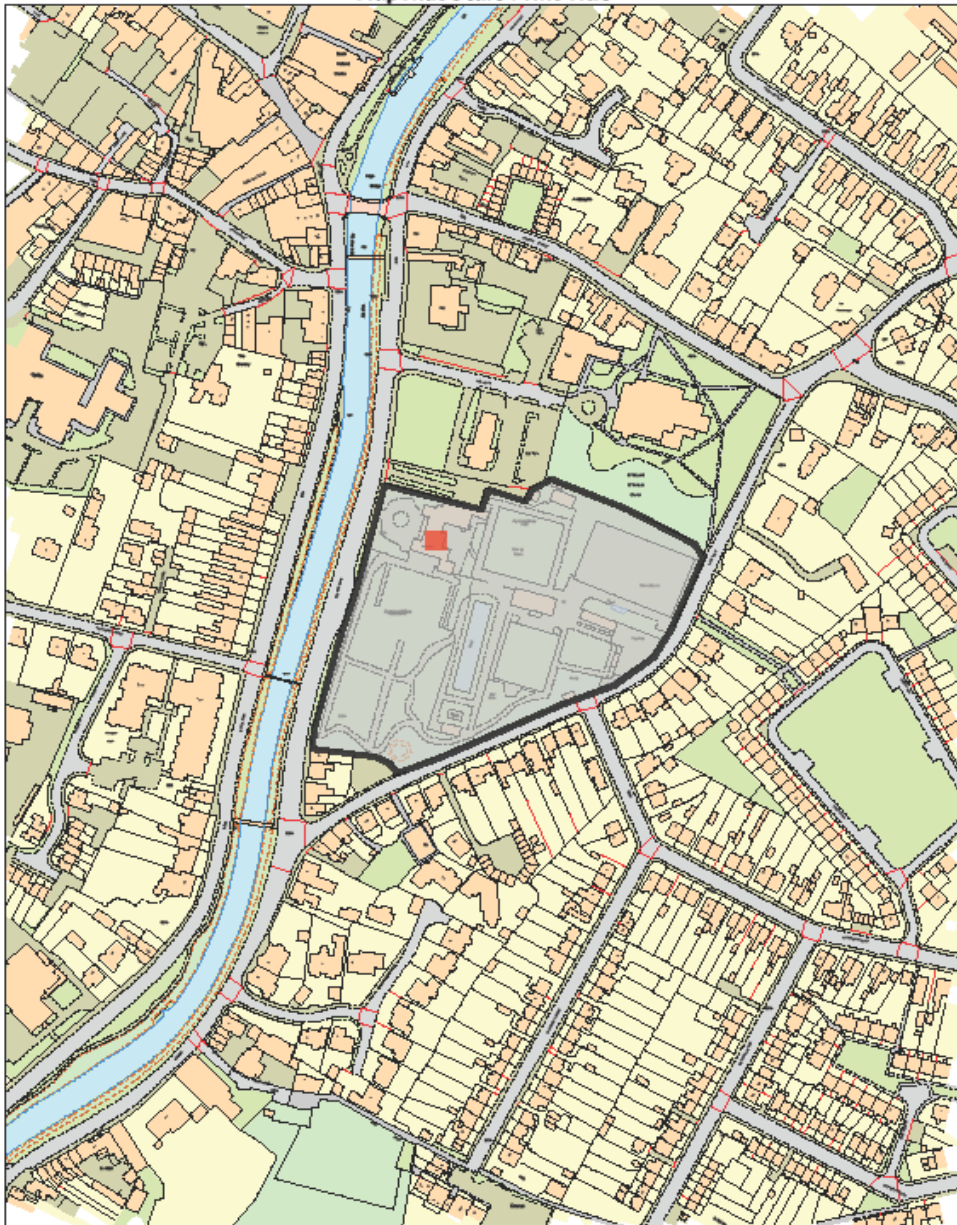
What are the enumerable rates?

What are the unenumerable rates?

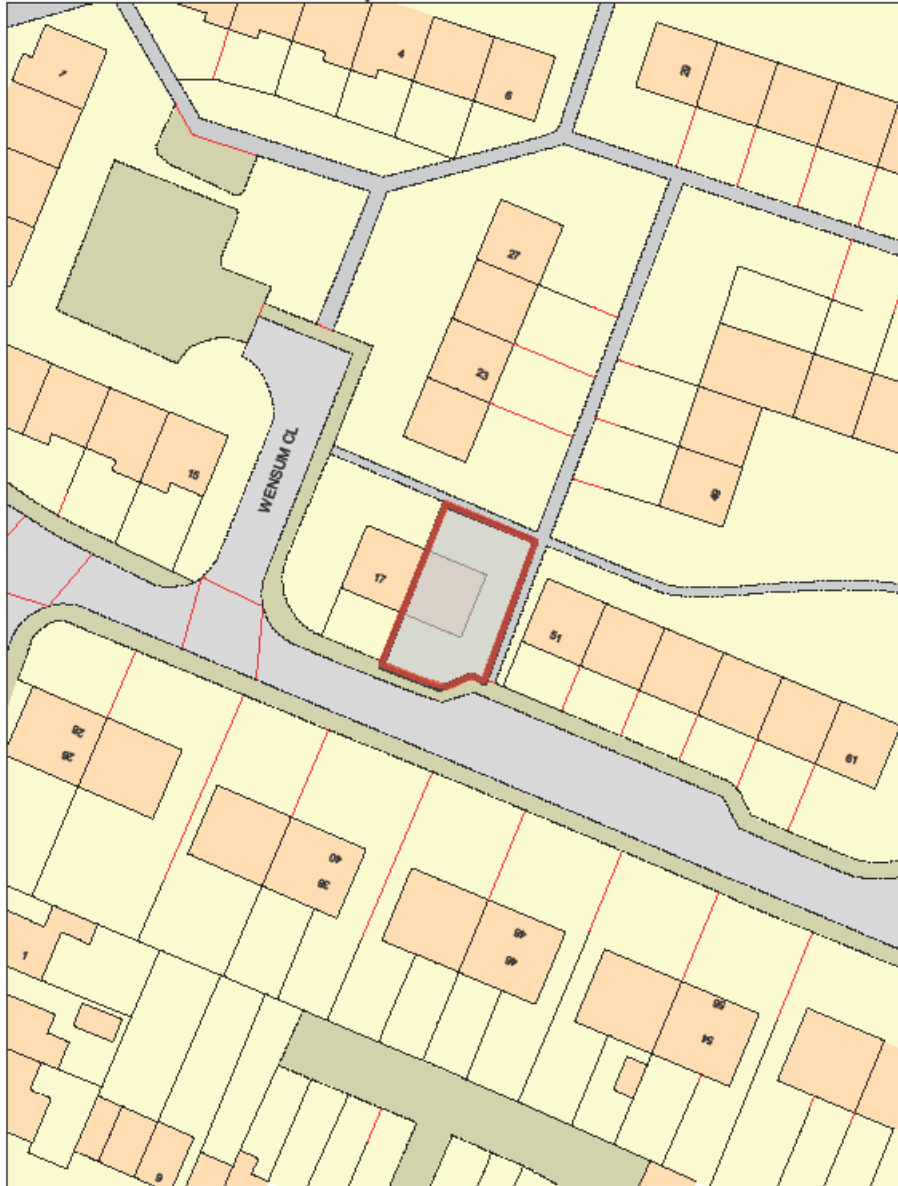
What are the calculable rates?

What are the uncalculable rates?





MapThat Scale Print Title



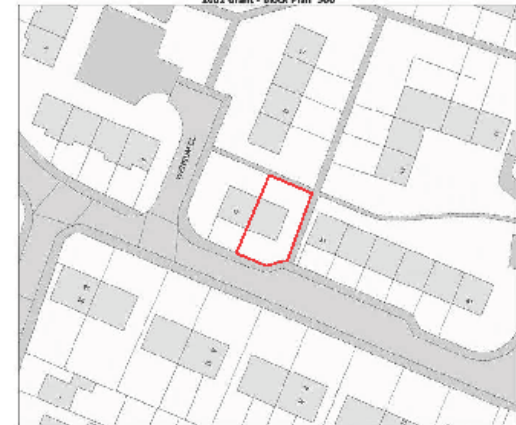
1002 Grant - Location Plan 2500



MAP SCALE 1: 2500
 CREATED DATE: 19/09/2018
 PHOTOGRAPHIC COPY
 LIABLE TO DISTORTION
 IN SCALE

© Crown copyright and database rights 2018 Ordnance Survey 100018351

1002 Grant - Block Plan 500



MAP SCALE 1: 500
 CREATED DATE: 19/09/2018
 PHOTOGRAPHIC COPY
 LIABLE TO DISTORTION
 IN SCALE

© Crown copyright and database rights 2018 Ordnance Survey 100018351

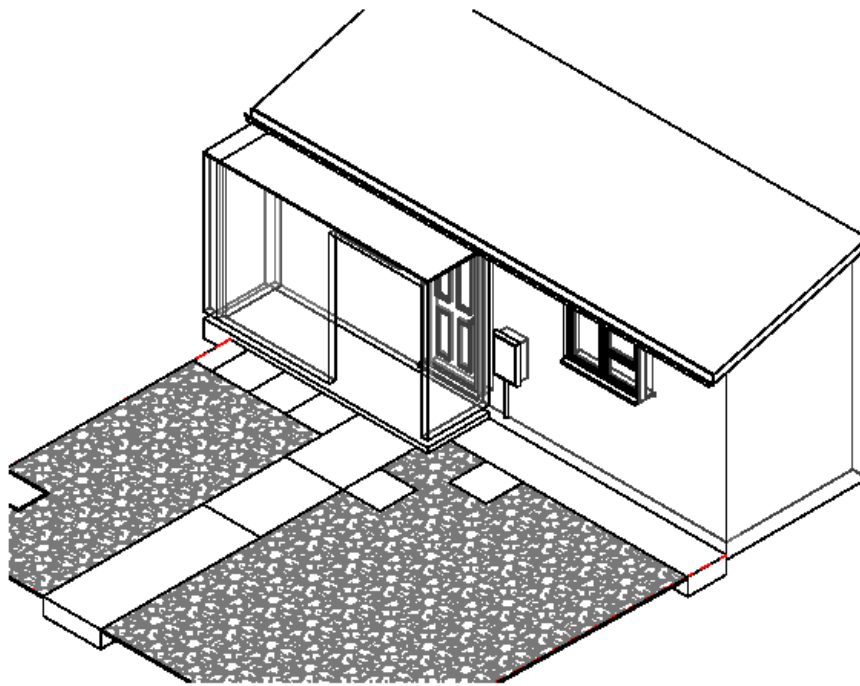
Rev.	Description	Date



CLIENT Mr G Wiseman
ADDRESS 19 Severn Road
 Spalding
 PE11 2JX

PROJECT Accessibility Adaptations
SHEET Site Block Location

Date 04/02/2018	Project number DFG/18/1002	Scale (@ A3)
Drawn by SG	DRAWING NUMBER 09	REV



1 3D View - (Existing)

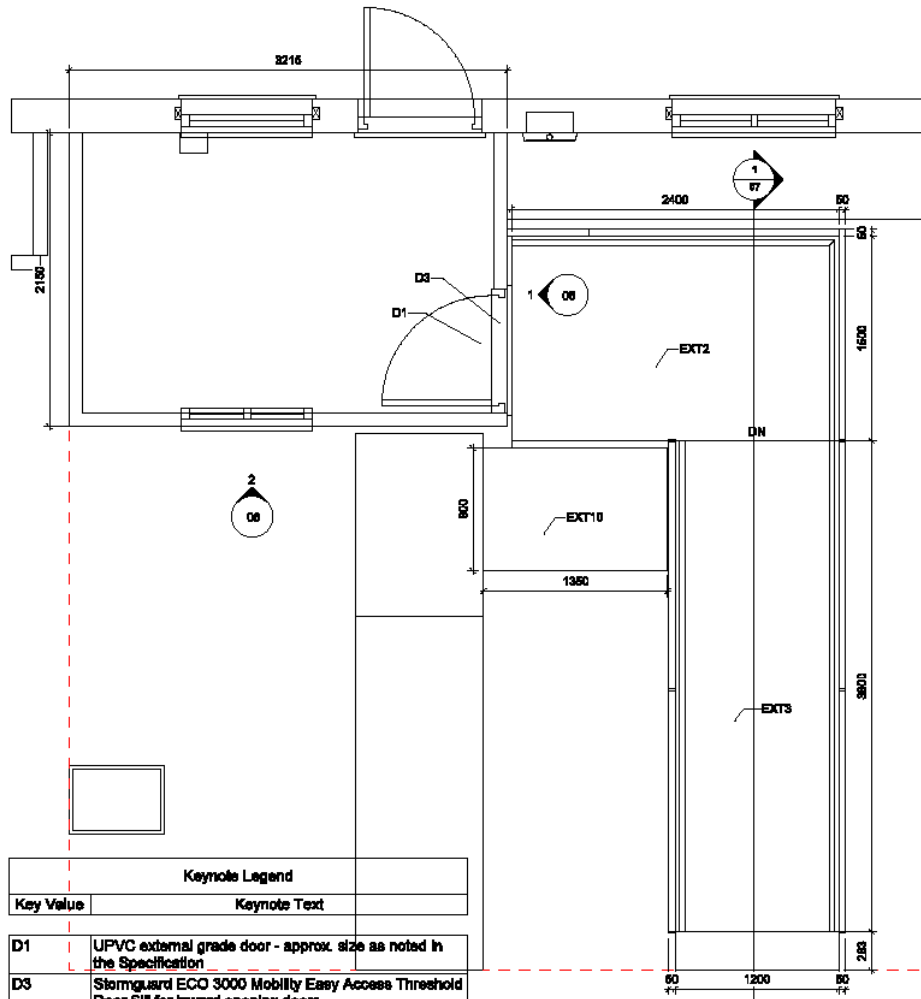
Rev.	Description	Date



CLIENT Mr G Wiseman
ADDRESS 19 Severn Road
 Spalding
 PE11 2JX

PROJECT Accessibility Adaptations
SHEET Existing 3D View

Date 04/10/2018	Project number DFG/18/1002	Scale (@ A3)
Drawn by SG	DRAWING NUMBER 02	REV



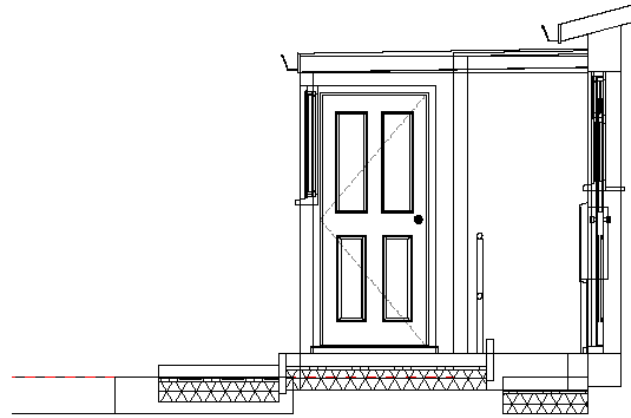
1 Ground Floor - (Proposed)
1 : 25

Keynote Legend	
Key Value	Keynote Text
D1	UPVC external grade door - approx. size as noted in the Specification
D3	Stormguard ECO 3000 Mobility Easy Access Threshold Door Sill for inward opening doors
EXT2	Concrete platform with fall of 1:50 away from dwelling for rainwater runoff
EXT3	Concrete ramp with transverse brushed non-slip surface
EXT10	Concrete step



Rev.	Description	Date

CLIENT ADDRESS	Mr G Wiseman 19 Severn Road Spalding PE11 2JX	PROJECT	Date	Project number	Scale (of A3)
		Accessibility Adaptations	04/03/2018	DFG/18/1002	1:25
		SHEET	Drawn by	DRAWING NUMBER	REV
		Proposed Ground	SG	05	



1 **Elevation 1 - a**
1 : 25

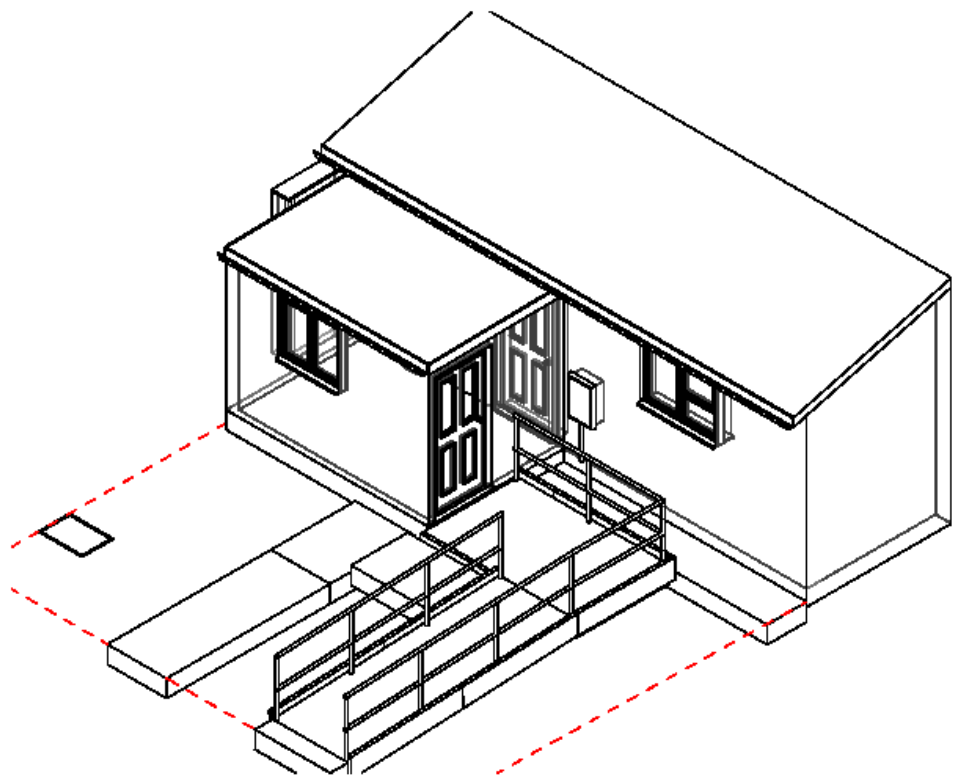


2 **Elevation 2 - a**
1 : 25



Rev.	Description	Date

CLIENT Mr G Wiseman ADDRESS 19 Severn Road Spalding PE11 2JX	PROJECT Accessibility Adaptations	Date 04/04/2018	Project number DFG/18/1002	Scale (@ A3) 1 : 25
	SHEET Proposed Elevations	Drawn by SG	DRAWING NUMBER 06	REV



1 3D View - (Proposed)

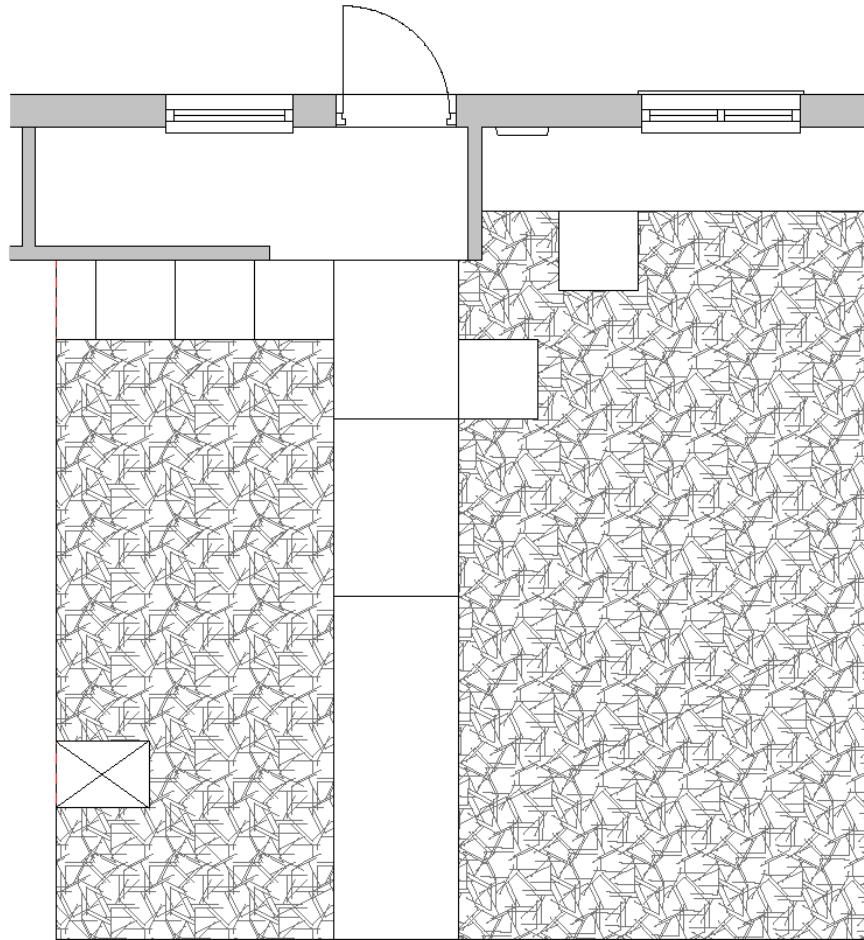
Rev.	Description	Date



CLIENT Mr G Wiseman
ADDRESS 19 Severn Road
 Spalding
 PE11 2JX

PROJECT Accessibilty Adaptations
SHEET Proposed 3D View

Date 24/10/2018	Project number DFG/18/1002	Scale (A3)
Drawn by SG	DRAWING NUMBER 08	REV



1 **Ground Floor - (Existing)**
1 : 25



Rev.	Description	Date

CLIENT Mr G Wiseman 19 Severn Road Spalding PE11 2JX	PROJECT Accessibility Adaptations	Date outside	Project number DFG18/1002	Scale (A3) 1 : 25
	SHEET Existing Ground	Drawn by SG	DRAWING NUMBER 01	REV



Bus Stop
WV59 MUP

WV59 MUP

WV59 MUP







15

HEAR CARE

MapThat Scale Print Title

